



GeoDAS-FLS

Forward-Look Sonar Data Acquisition and Processing



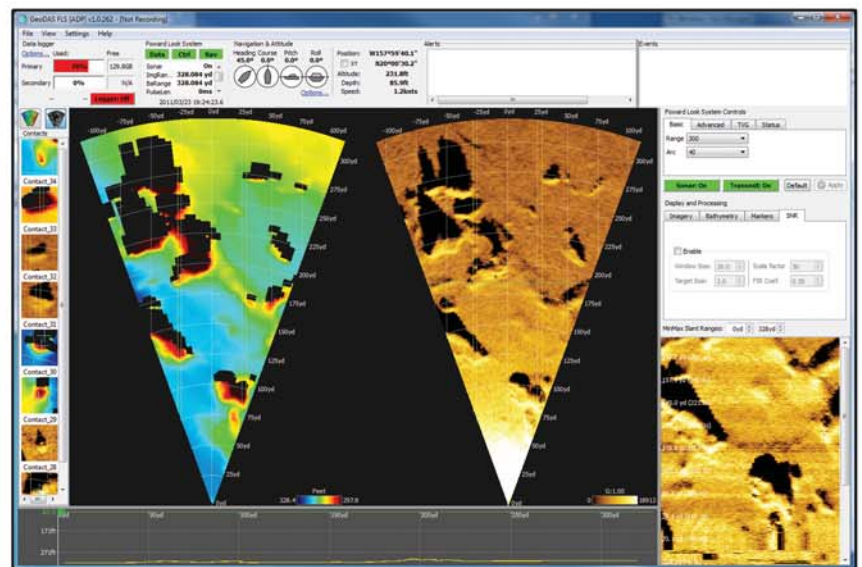
Obstacle Avoidance

Target Analysis

Real-time Processing

Bathymetry & Imagery Displays

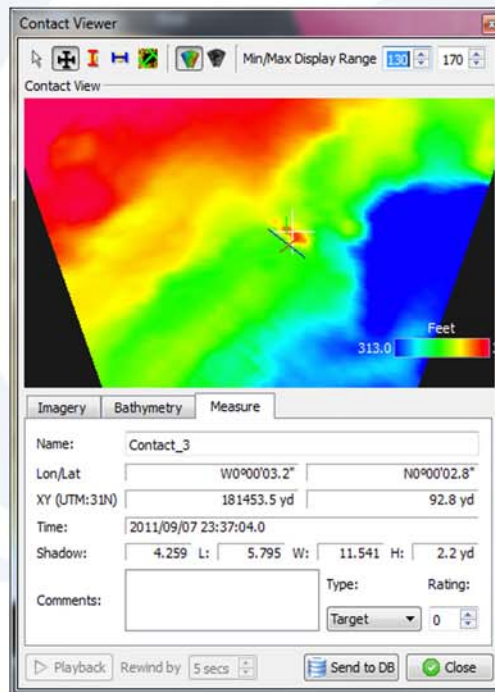
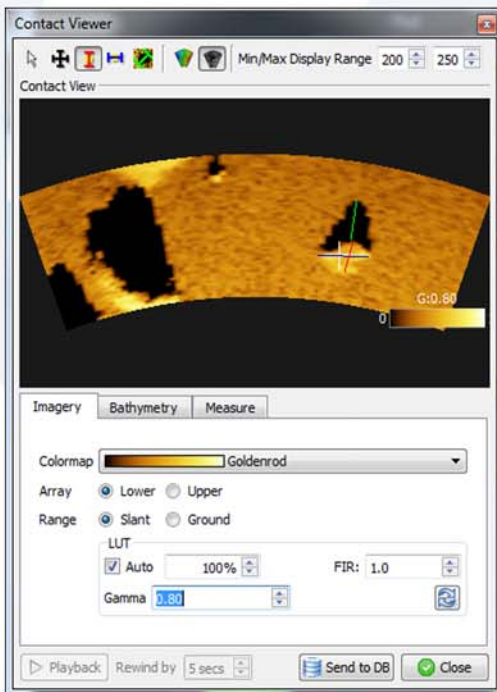
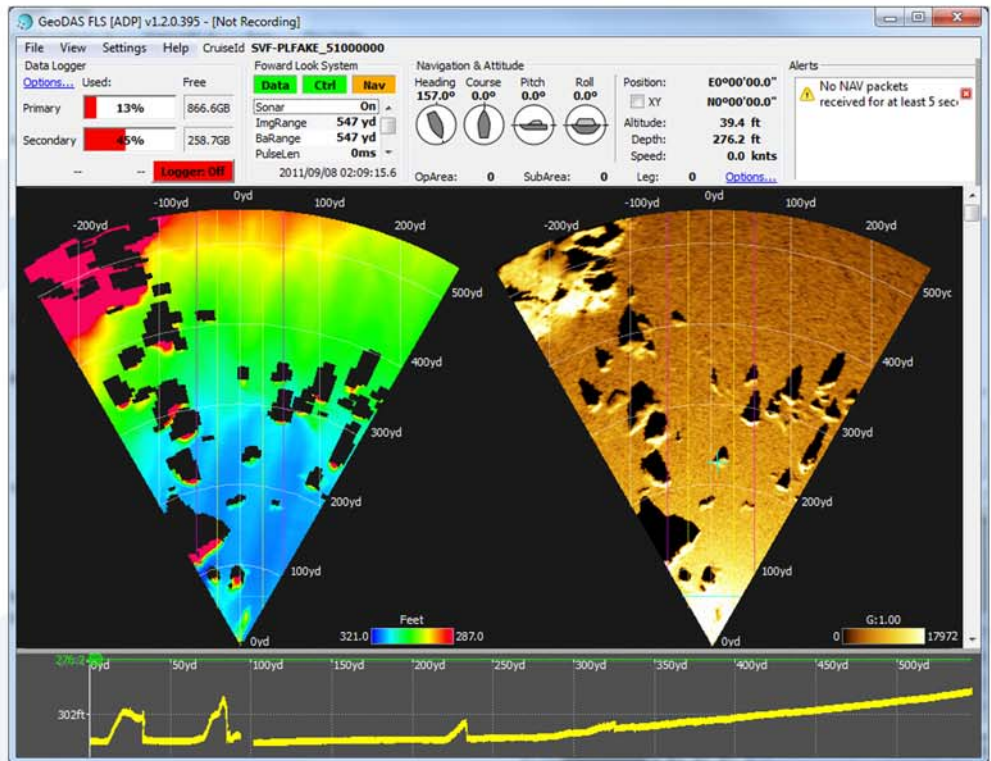
GeoDAS-FLS has been designed to control and acquire data from the Ultra Electronics high-frequency wide-band forward looking sonar system. The side-by-side bathymetry and imagery displays provides obstacle avoidance capabilities as well as an overall environmental awareness. In addition to the acquisition and playback module, GeoDAS-FLS also includes target analysis capabilities. Overall, GeoDAS-FLS provides a superior working environment for vehicle operators, particularly in low-visibility environments.



GeoDAS FLS GUI

The GeoDAS-FLS GUI provides a customizable interface for acquiring and analyzing your forward-look data. The main GUI component is the side-by-side bathymetry and imagery sector displays. Beneath the sectors displays is a bathymetry profile for the region ahead of the vehicle. Additional GUI panels include:

- Logging controls
- System status indicator lights
- Navigation & attitude information
- Imagery & bathymetry processing
- Pseudo-waterfall
- Target finder



FLS Controls

GeoDAS-FLS allows operators to directly control the sonar acquisition settings. Specific controls available include:

- Range and sector width
- Ping Interval
- Pulse length
- Pulse amplitude
- TVG control
- Apply pitch & roll corrections

Target Analysis

- Mark bathymetry or imagery targets
- Process target images post-capture
- Target mensuration capabilities
- Customize feature categories
- Output to target database



Oceanic Imaging Consultants, Inc.

Founded in 1993, OIC provides seafloor mapping software, systems and services to the world's military, government, commercial, and academic markets. With a solid understanding of the requirements of the hydrographic community and an emphasis on providing quality customer support, OIC should be your first stop for all of your seafloor mapping needs.



1144 10th Ave, Suite 200 Honolulu, HI 96816
 TEL: 808 539 3706 FAX: 808 791 4075
 www.oicinc.com info@oicinc.com